

SOLO 250 BRT

Single-Roll Wrapper Bathroom Tissue

**We took the gold
in tissue wrap
speed records.**

**Wraps up to 240 ppm
Poly and Paper wrap
ready**

**Large reel diameter
for long production
runs**

**Continuous motion
movements for less
vibration**

**Exceptionally small
footprint**

**Quick and easy
change-overs from
paper to poly**

The InFINITY Solo 250BRT is a high speed (up to 240 ppm) single roll wrapper that packs bath tissue in poly and paper. This makes it the fastest single roll wrapper on the planet. Along with its speed, the Solo 250 carries a very small footprint while still being able to accommodate large reel diameters for long production runs. From taking rolls from the log saw to running them over the sealing belts, the Solo 250 BRT operates with lightning speed and precision. This wrapper is a great way to increase your line's speed and performance. The Solo 250BRT truly represents what we stand for, efficiency by design.

SOLO 250 BRT TECHNICAL DATA



BRT Roll Dimensions

Diameter: Min - 90mm (3.54"), Max - 140mm (5.5")
Cut length: Min - 90mm (3.54"), Max - 115mm (4.52")
Core diameter (inside): Min - 70mm (2.75"), Max - 76mm (3.00")

Reel Characteristics

Width: Min - 340 (13.38"), Max - 550mm (21.65")
Diameter: Max - 1200mm (47.25")
Core diameter: 70 - 76 mm (2.76" - 3.00")

Wrap Material

Paper:
MG or MF paper with basis weight of 14 - 17 lb.
Sufficient moisture content (approx. 5-6%) is recommended to avoid any tearing of wrap

Poly (option):
18 - 45 micron (0.70 - 1.77 mil)
Heat sealable polyethylene, density : 0.870 - 0.930 grs/cc

Machine Speed*

Max speed for both paper and poly is up to 220 packs/min
(Dependent upon packaging character)

Power / Air Requirements

	International Measurement	US Measurement
Air Consumption	284 NL/min	10 CFM
Air Pressure	5.52 bar	80 PSI
Main Power**	380 volt, 3 phase, 50 hertz	480 volt, 3 phase, 60 hertz
Installed Power**	82 kVA	100 Amps
Control power	24 VDC	24 VDC

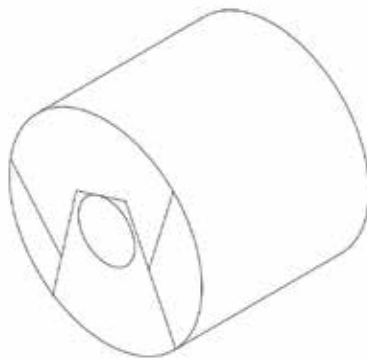
Change-over Time

Pack to Pack: 8 minutes
Poly Reel: 5 minutes
Paper to Poly: 80 minutes

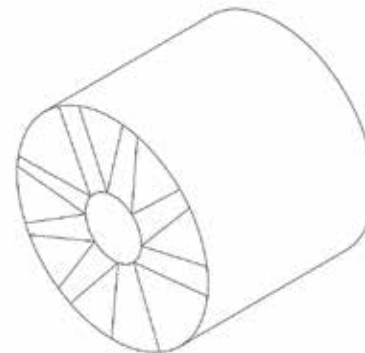
**Max speeds are guaranteed production speeds.
**Main power requirements are subject to change based on country.
***Soft rolls or low density rolls may not be able to achieve these speeds.
Please send product to Infinity for determination.*



Examples of Pack Configuration



Poly



Paper

Corporate Headquarters: 2249 American Blvd
De Pere, WI 54115, USA
Tel: 920-965-0222

European Office :
Via Buozzi 55
40057 Cadriano di Granarolo, Bologna, Italy
Tel:+39-051-0560980

Infinity Machine & Engineering Corp.
info@infinitymec.com
www.infinitymec.com